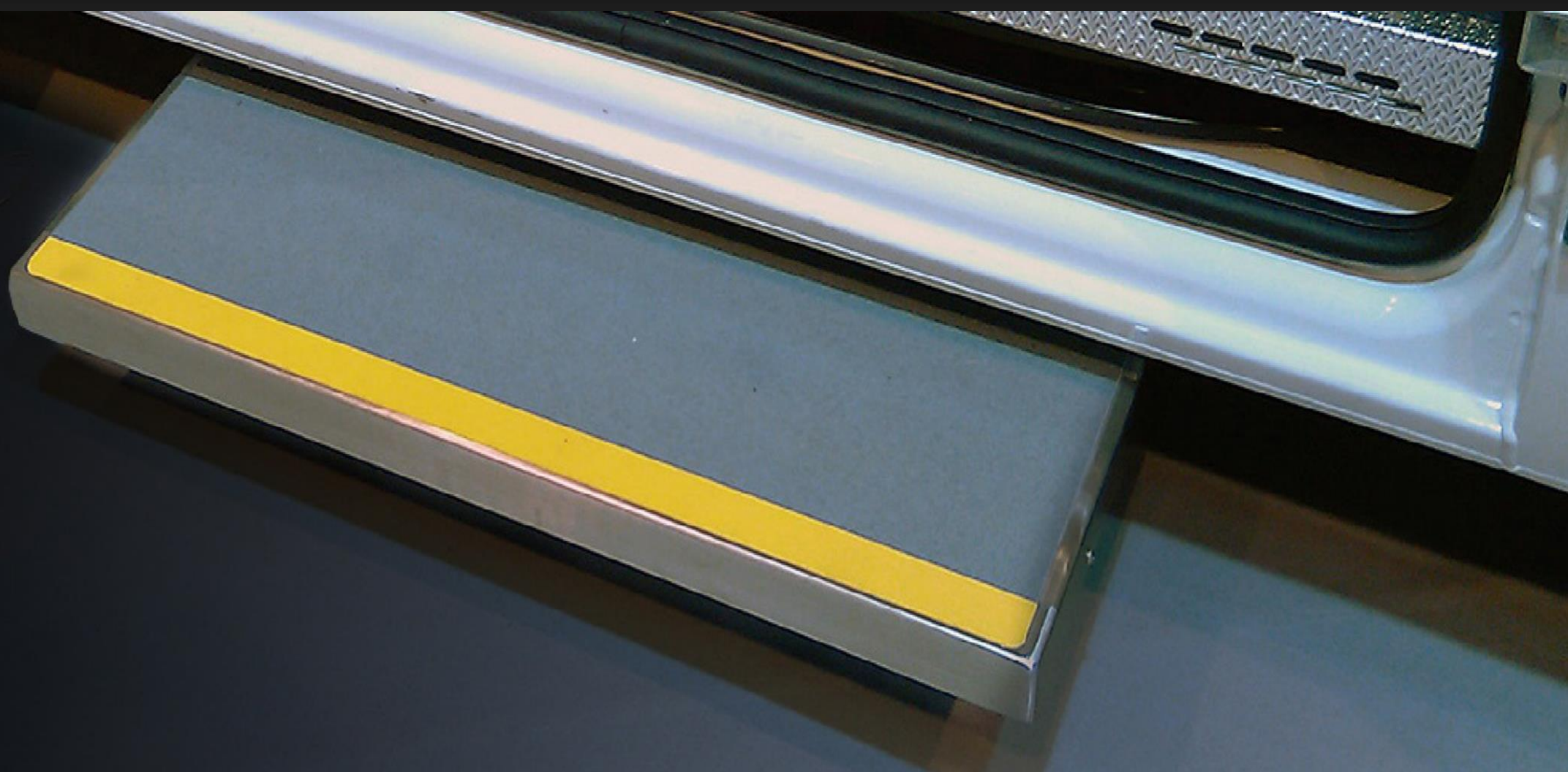




# STEPCONCEPT



**TLS & TLM** SERIES

## ELECTRIC & MANUAL STEP



### 100% French steps

- Fully designed and assembled in our workshops
- A choice of high quality components to guarantee the quality of our products and the reliability of our supplies
- Price, delivery and service **direct from the factory** throughout Europe



### A responsible company

- Workspaces adapted to the well-being of employees
- Responsible purchasing with an emphasis on local suppliers
- Limitation of resources
- Full recycling of waste

## ■ A product that will stand the test of time

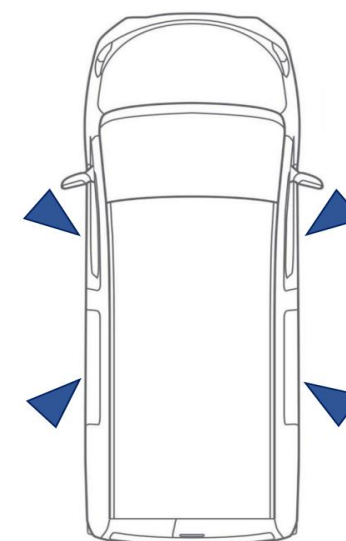
- **Tested over 1,000,000 cycles**
- Recognised for over 15 years by leading European bodybuilders
- 100% stainless steel steps with a high quality anti-slip surface coating
- Maintenance-free operation in all conditions: snow, mud, sand...
- No accumulation of sludge, thanks to its unique technology
- Operating temperature - 30°C to + 60°C



## ■ Unparalleled compactness

- Total thickness, including frame : 60 mm
- Very low depth : 380 mm
- No modifications to the floor required

Steps can be fitted to most vehicles, under all doors or on specific bodywork.



# TLS –TLM series

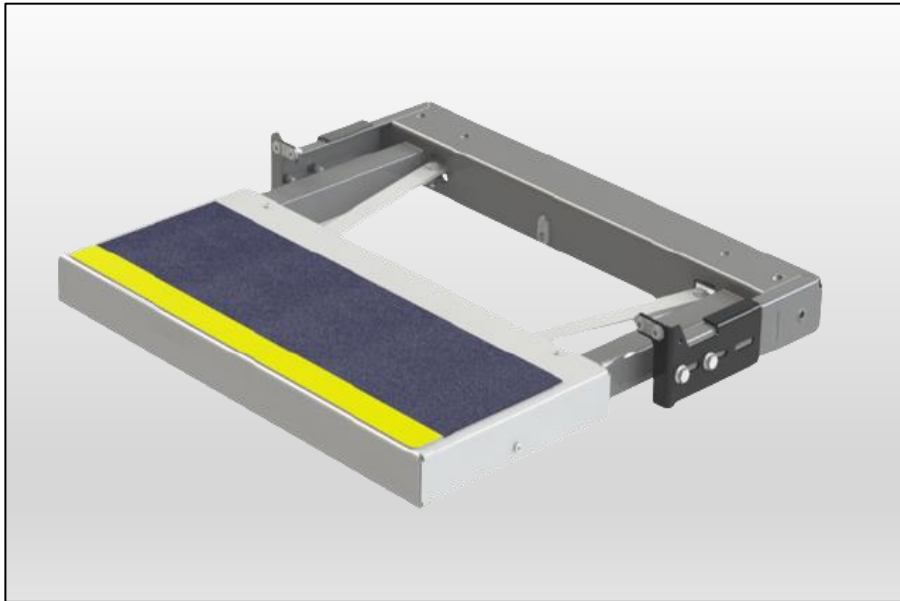
## Telescopic step



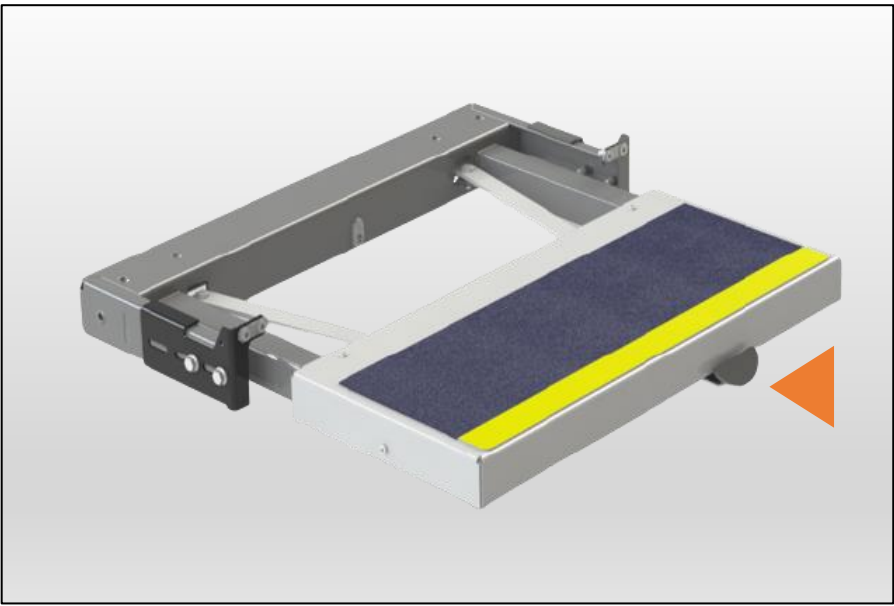
### A full range of products

- **TLS** : ELECTRIC step, 600, 900 or 1100 mm width
- **TLM** : MANUAL step (foot control) 600 or 900mm width

#### Electric TLS

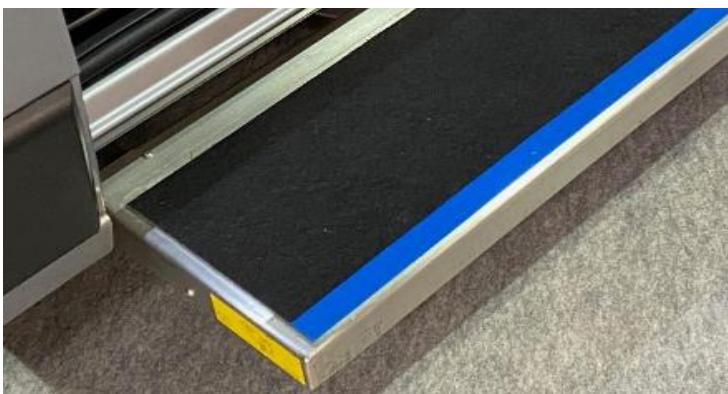


#### Manual TLM



### Ultra-resistant, non-slip TBS polyurethane coating

The safest non-slip coating, even in the rain. The TBS coating was developed in particular for boat decks. Comfortable to use thanks to its flexible structure, it offers a very good resistance to UV light and temperature.



Surface coating colour



**OPTION**

Edge strip colour



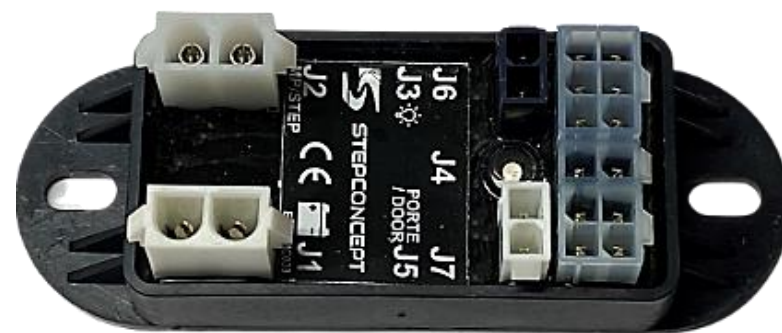
# TLS serie

## The essential reference

### Electronic control unit with diagnostic function

The new electronic module (2021) incorporates important technological innovations :

- Simplified wiring on the vehicle
- Full protection against short circuits and overloads
- Highly resistant unit control, fully resonated
- Slowing down at the end of the step in and out
- Buzzer with separate power supply
- Standby mode: consumption less than 1mA
- Anti-pinch safety: the step stops in case of obstacle
- Diagnostic function: variable flashing of the dashboard light in the event of a fault
- Inputs / outputs available on the unit control for special functions



### Wiring kit (delivered with the step)

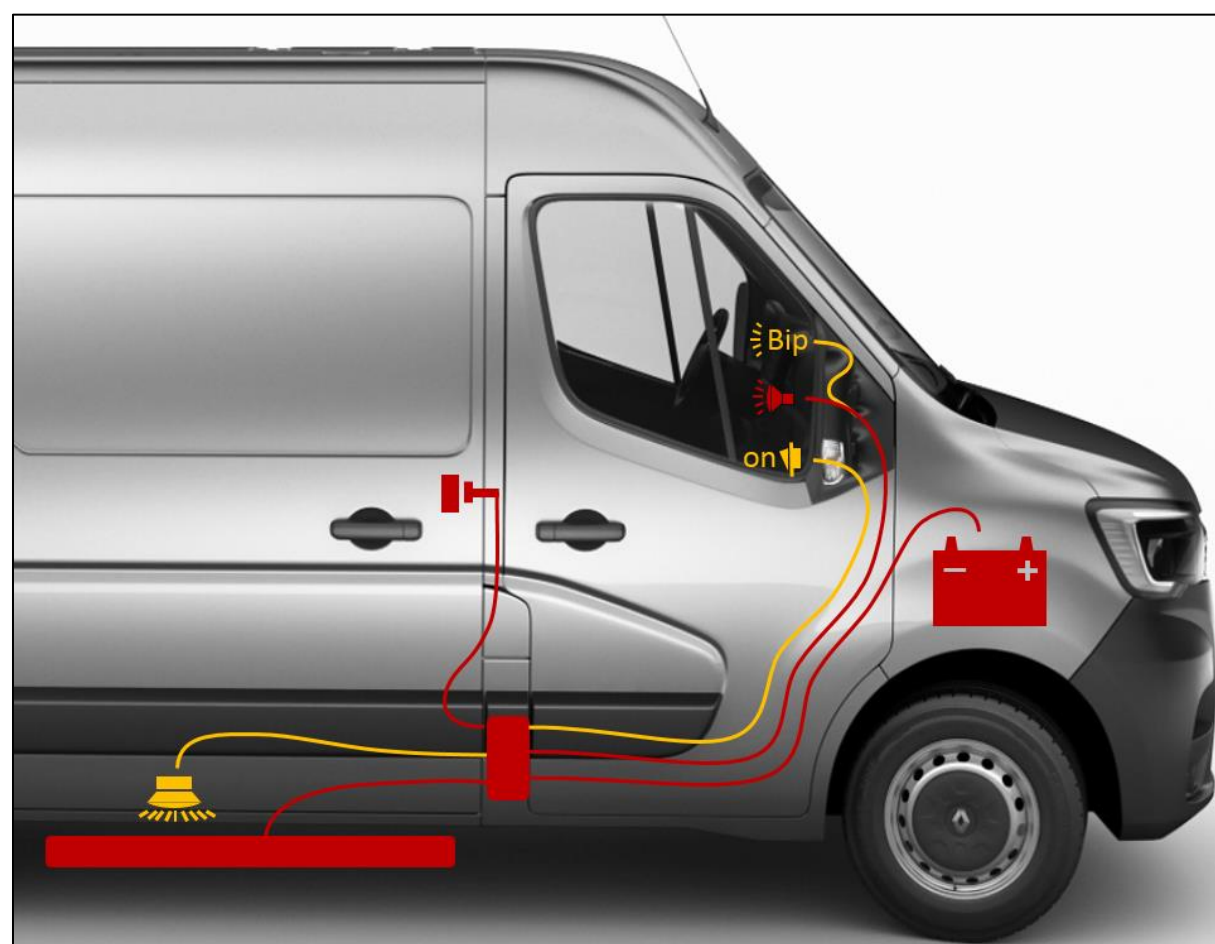


#### Basic harnesses

- Electronic control unit
- Power supply
- LED dashboard indicator
- Door sensor

#### Options

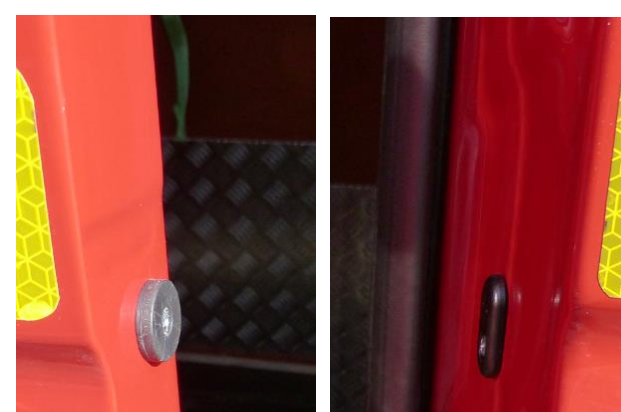
- Lockout switch
- Buzzer
- Step lighting
- Extension cable



### Magnetic door sensor STEPCONCEPT

The new magnetic door sensor automatically triggers the step when the vehicle door is opened or closed.

It fits easily into the door pillar or door trim and offers a detection distance of up to 20mm. .





An advice ? A question ?  
info@stepconcept.com

## Options



### F0010 – Buzzer

Acoustic alarm

To be connected directly to the pre-equipped harness on the dashboard

Independent of the LED dashboard indicator, controlled by the electronic unit

Buzzer switches off when the vehicle ignition is switched off

Can be switched off by engaging the handbrake



### F0012 – Lockout switch

In addition to the door sensor, allows the step to be activated or deactivated when the door is opened

To be installed on the dashboard of the vehicle or near the door.



### F0013 – Step lighting

It provides high intensity lighting of the vehicle access area

The lighting is supplied in kit form, which is very easy to install and connect to the electronic control unit.



### F0014 – Switch control

Switch to replace the automatic door sensor

To be installed on the vehicle dashboard or near the door.



### F0016 - Automatic closing of the step

Shunt to be connected to the module to obtain the automatic closing of the step as soon as the vehicle contact is switched on.

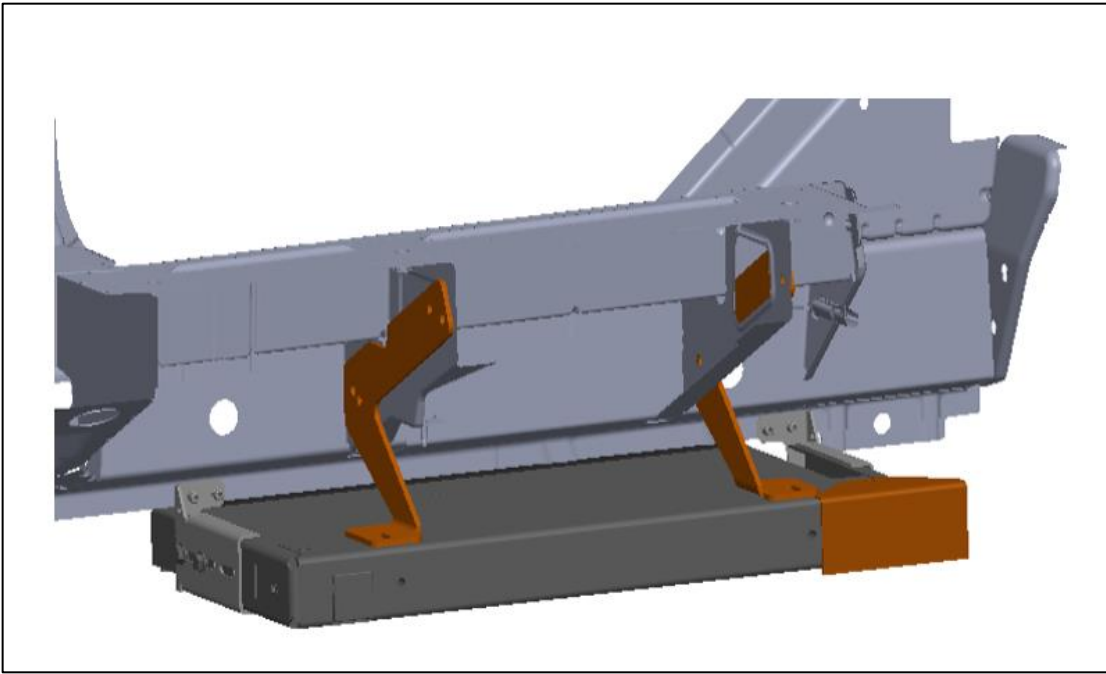
# FIXING KITS

## For mechanical mounting of steps

■ A fixing kit for every vehicle

Our fixing kits have been specially developed for each type of vehicle.

They allow a very fast mechanical adaptation of the step, without any drilling of the vehicle frame.  
All brackets are galvanised, with high quality metallic screws



Same fixing kits  
for TLM and TLS

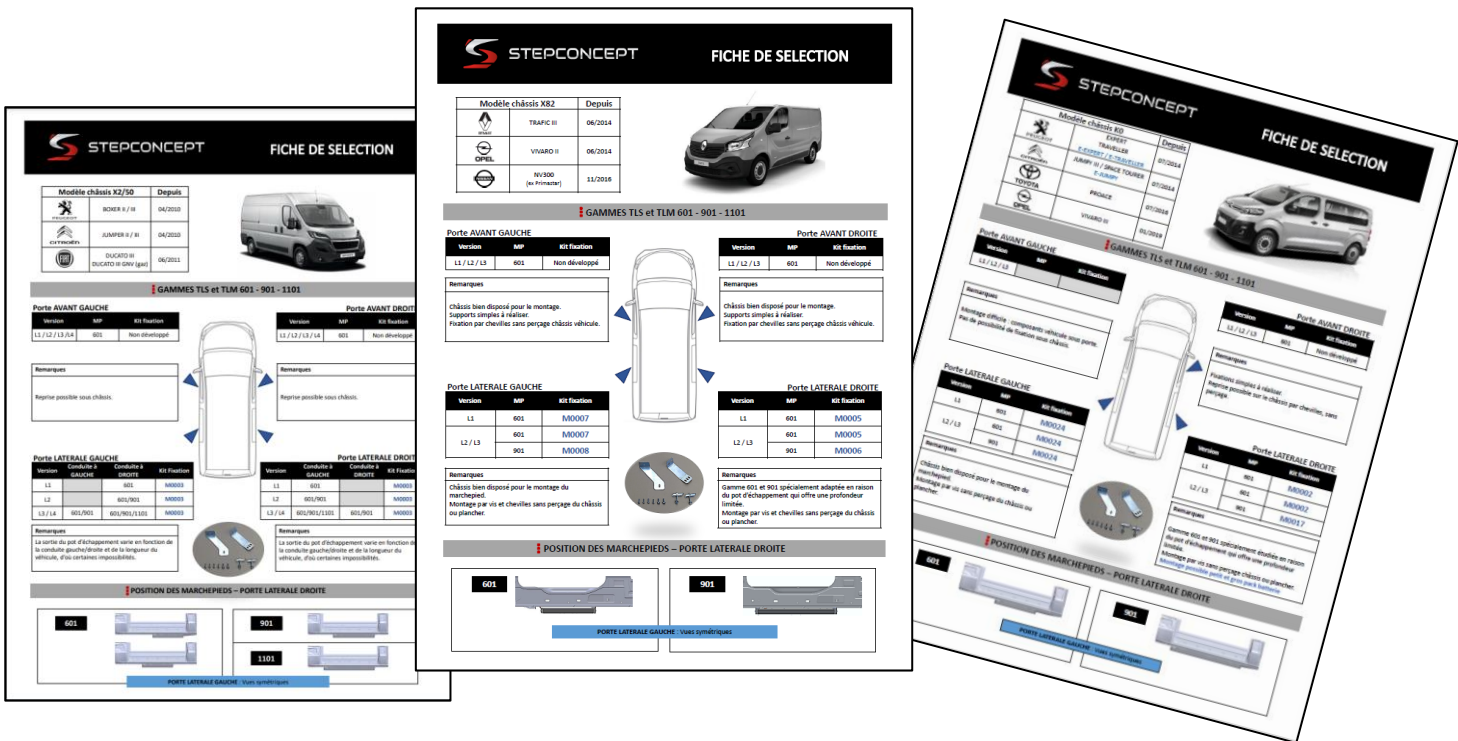
| COMPOSITION DU KIT / KIT COMPOSITION |                    |                    |                   |                           |                                     |                                     |
|--------------------------------------|--------------------|--------------------|-------------------|---------------------------|-------------------------------------|-------------------------------------|
| N°                                   | 1                  | 2                  | 3                 | 4                         | 5                                   | 6                                   |
| Type                                 | Vis/Screw<br>M6X25 | Vis/Screw<br>M8X25 | Ecrou / Nut<br>M8 | Cheville /<br>Toggle bolt | Support arrière 1<br>Rear Bracket 1 | Support arrière 2<br>Rear Bracket 2 |
| Qté/Qty                              | 4                  | 2                  | 0                 | 2                         | 1                                   | 1                                   |
| Pièce<br>Part                        |                    |                    |                   |                           |                                     |                                     |

Our kits are composed of all the brackets, screws and dowels for fixing.  
  
Delivered in a bag with assembly instructions.

■ Determine the appropriate fixing kit

Find out how to choose the right mounting kit on our website [www.stepconcept.com](http://www.stepconcept.com)

By selecting the vehicle, find the corresponding selection sheet which presents the feasibility of mounting steps and the appropriate fixing kits.



# TECHNICAL INFORMATION

A proven reliability



An advice ? A question ?  
info@stepconcept.com

## Technical specifications

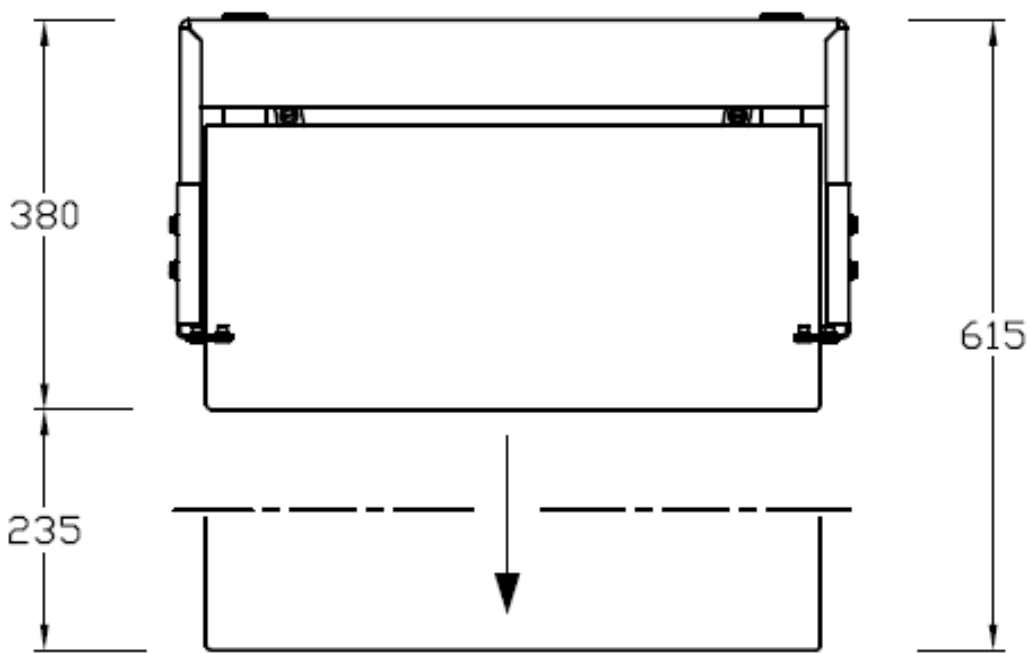
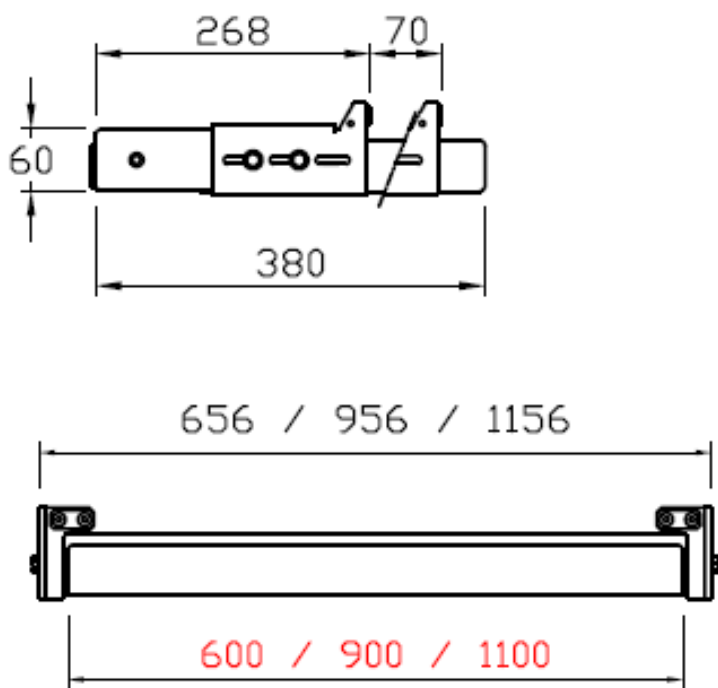
|                                  |                              |
|----------------------------------|------------------------------|
| Endurance test                   | 1,000,000 Cycles             |
| Load capacity                    | 250 Kg ( Test load : 375 Kg) |
| Extending/retracting speed (TLS) | 0,19 m/s                     |
| Stress test (TLS)                | 150 N                        |
| Motor (TLS)                      | 12V, fully waterproof, IP 5X |
| Conformity                       |                              |



Directive 2006/42/CE – Machinery Directive  
Directive 2001/85/CE – Vehicle accessibility  
Regulation E13 - 10R – 06 15879 (electromagnetic compatibility)

## Dimensions & weight

|               | Step dimensions    | Overall dimensions | Weight |
|---------------|--------------------|--------------------|--------|
| TLS / TLM 601 | 600 x 280 x 60 mm  | 650 x 380 x 60 mm  | 20 Kg  |
| TLS / TLM 901 | 900 x 280 x 60 mm  | 950 x 380 x 60 mm  | 25 kg  |
| TLS 1101      | 1100 x 280 x 60 mm | 1150 x 380 x 60 mm | 29 Kg  |



## Codification

Example : 601 TLS E3 GXX

| Step width | Code | Type               | Coating     | Edge strip   | Buzzer       |
|------------|------|--------------------|-------------|--------------|--------------|
| 600        | 601  | TLS E3<br>Electric | G<br>Grey   | X<br>Without | X<br>Without |
| 900        | 901  | TLM M2<br>Manual   | N<br>Black  | J<br>Yellow  | B<br>With    |
| 1100       | 1101 |                    | J<br>Yellow | B<br>Blue    |              |
|            |      |                    |             | R<br>Red     |              |



STEPCONCEPT

Discover our ramps made in France



Light ramps & wheelchair version



Loading ramps



Telescopic & transportable ramps

12, Z.A. la Vallée Verte - 53940 LE GENEST ST ISLE  
Tel : 0033 (0)2 43 26 14 72 – VAT number FR53 440 883 767  
[info@stepconcept.com](mailto:info@stepconcept.com) | [www.stepconcept.com](http://www.stepconcept.com)